



iMedicine Review



Pass your ABIM Exam

Register with the form inside
or online at imedecinereview.com



- **Discounted registration fee for a limited time**
- **30 Category 2 CME Hours**

Harrisburg Board Review |

May 3-5, 2013 (Fri-Sun)
Pinnacle Health Hospital Program
Capital Suite, Brady Building
205 S Front Street, Harrisburg, PA 17104

Philadelphia Board Review |

May 17-19, 2013 (Fri-Sun)
Perelman Quadrangle, University of PA
Meyerson Hall, Meeting room B3
210 S 34th St, Philadelphia, PA 19104

Pittsburgh Board Review |

May 31-June 2, 2013 (Fri-Sun)
University Club, University of Pittsburgh
Conference Room A
123 University Pl, Pittsburgh, PA 15260

Connecticut Board Review |

June 14-16, 2013 (Fri-Sun)
University of Connecticut
Keller Auditorium
263 Farmington Ave, Farmington, CT 06030

Balt/Wash Board Review |

June 28-30, 2013 (Fri-Sun)
University of Baltimore
Meeting Room 219
11 W Mt. Royal Ave, Baltimore, MD 21201

New York City Board Review |

July 12-14, 2013 (Fri-Sun)
AMA Executive Conference Center
1601 Broadway, New York, NY 10019

Registration by Mail

Course you want to attend:

- Harrisburg, PA | May 3–5, 2013
- Philadelphia, PA | May 17–19
- Pittsburgh, PA | May 31–June 2, 2013
- Farmington, CT | June 14–16, 2013
- Baltimore, MD | June 28–30, 2013
- New York, NY | July 12–14, 2013



iMedicine
Review

Degree _____

Your Full Name _____

Residency Program/Organization _____

Street Address _____

City _____ State _____ Zip _____

Email _____

Phone _____

Include a check for \$595 payable to “iMedicine Review” and mail to
iMedicine Review, 1268 Meadowbrook Rd, Lancaster, PA 17603.

Registration Fee and Special Discounts: Physicians: \$595. Residents in training: \$545. Group Rate (2 or more): \$495 (participants in a group should send their applications together, but they may attend different courses.) **Chief Residents or Resident Representatives: \$245.**

(Letter required from program director stating role as chief resident or resident representative. Only one chief resident or representative from a program can use this discount. Limited seats!)

Cancellation Policy: Please refer to our website.

Course Schedule (3 days)

Morning Sessions

8 am–12:45 pm (break from 10:15 to 10:30)

Lunch

12:45 pm–1:30 pm (many nearby dining options)

Afternoon Sessions

1:30 pm–6:30 pm (break from 3:30 to 3:45)

Note: Same schedule for all locations. Topics are discussed as Q&As, Table Charts, Matching Exercises and Key Points. For details email info@imedecinereview.com

Day 1 (Friday)

8 am–10:30 am: Rheumatology & Immunology

10:45 am–12:45 pm: Hematology

1:30 pm–3:30 pm: Oncology & Preventive Medicine

3:45 pm–6:30 pm: Nephrology & Electrolyte Disorders

Day 2 (Saturday)

8 am–10:30 am: Endocrinology & Metabolism

10:45 am–12:45 pm: Pulmonary Medicine

1:30 pm–2:30 pm: Critical Care Medicine

2:30 pm–3:30 pm: Geriatrics, Ethics &

Palliative Care Medicine

3:45 pm–6:30 pm: Infectious Diseases

Day 3 (Sunday)

8 am–11:45 am: Cardiovascular Medicine

11:45 am–12:45 pm: Dermatology,

Ophthalmology & ENT Diseases

1:30 pm–3:30 pm: Neurology & Psychiatry

3:45 pm–6:30 pm: Gastroenterology

& Hepatology

Only
3 Days
Fri–Sun

\$495
per person in
groups of 2
or more

Why iMedicine Review is your very best choice in ABIM courses.

A success rate greater than 99% Nearly all students received their certification or recertification over the last 8 years—better than many older, more expensive courses.

Lower tuition Physician tuition: \$595. Residents in training: \$545. Groups of two or more: \$495. Chief residents/resident representatives of internal medicine residency programs can attend for \$245 (only one per group).

Guaranteed satisfaction If you fail your ABIM course you can participate again free.

Online high-yields with explanations and clinical pearls free with your paid registration, using select material from Q&A1500™.

30 Category 2 CME Hours

Can't attend a live course? Try our:

Online Course (sections from the live course)
Course App for iPhone or iPad (details on the back page)

Q&A1500™ App for iPhone, iPad, iPod Touch and Android (details on the right-hand page)

 Or register online at iMedicineReview.com

Prepare anytime, anywhere with Q&A1500™

Get ready for the ABIM Exam using our exclusive app for iPhone, iPad, iPod Touch and Android.

Containing an extensive library based on manifestations and differential diag-

noses of diseases from all areas of internal medicine, Q&A1500™ offers more than **1,500 questions with answers** with brief high-yield explanations that summarize essential information.

The review offers clinical pearls with buzz words commonly used in the exam. The questions are categorized by topic, by various diseases, and by contents within each topic.

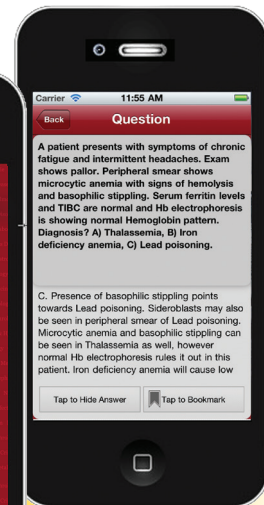
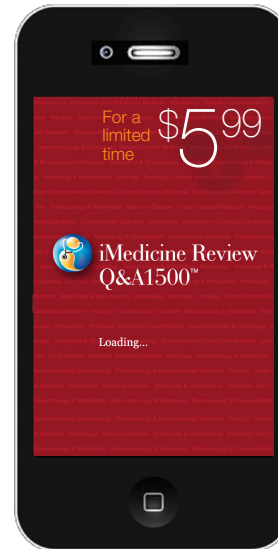
Topics covered:

- Cardiovascular Disorders
- Endocrinology & Metabolism
- Gastroenterology & Hepatology
- General Internal Medicine
- Hematology
- Infectious Diseases
- Nephrology & Hypertension
- Neurology
- Oncology
- Pulmonary & Critical Care Medicine
- Rheumatology & Musculoskeletal Disorders

Get Q&A1500™ at the Apple store on iPhone/iPad and on Android for just **\$5.99**. Separate purchase required.

Here's what users are saying...

- ▶ *'A tremendous exam preparation tool!'*
- ▶ *'Reviewing with this app tells you how much you know and where you need to improve.'*



Try the Free Lite Version

new!

iMedicine Review Course App

The first complete internal medicine review course app for iPad or iPhone.

Containing course material

selected from live classroom courses, this comprehensive review is designed for internal medicine residents, practicing internists and subspecialists who are preparing for ABIM

Internal Medicine certification or recertification examination.

Concise and to-the-point, this app offers a stepwise approach for management of diseases from all areas of internal medicine based on current guidelines.

The review features clinical

pearls, key points and buzzwords commonly used in exams and medical literature. It offers hundreds of MCQs, Exercises, Matching Quizzes and Tables. Separate purchase required.



Introductory price

\$39⁹⁹

(for a limited time)

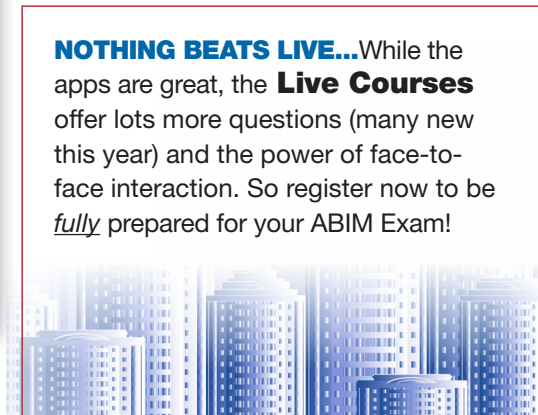
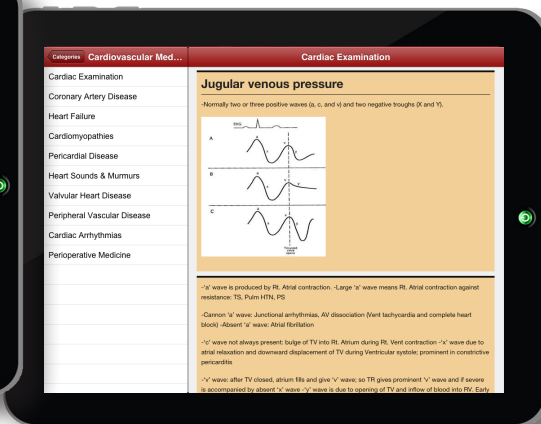
when you purchase from your device.

Users are speaking out...

'A powerful study tool!'

'The perfect refresher for the board exam.'

'Well organized, with an easy-to-use interface.'



NOTHING BEATS LIVE... While the apps are great, the **Live Courses** offer lots more questions (many new this year) and the power of face-to-face interaction. So register now to be **fully** prepared for your ABIM Exam!

Try the **Free Lite Version** providing a detailed review of Endocrinology.